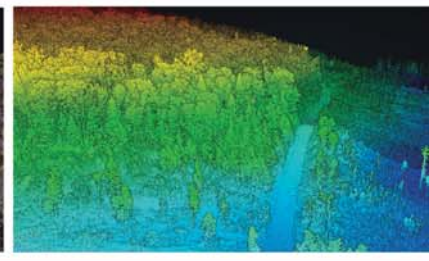


**KEY FEATURES & BENEFITS**

- » **Enhanced UAV Integrations**  
TerraHawk CW-20, M600 Pro, Vapor 55, & more
- » **Detailed Data at Higher AGL**  
Up to 65 m
- » **Very Compact and Lightweight**  
2.4 kg / 5.29 lbs., without camera
- » **360° Field of View**
- » **Robust Phoenix Design**  
Durable Aluminum Heatsink Body
- » **Multi-Target Capacity**  
Up to 2 target echoes per laser shot
- » **Fast and Accurate Measurement**  
700 k shots/s, up to 1.4 k points/s



**SCOUT-32**



The Phoenix Scout-32 is a powerful mid-range member of the Scout Series. This lightweight system collects survey-grade data with an AGL range up to 65 m. An excellent option for building high-density point clouds of smaller scan areas, the Scout-32 also features options for photogrammetry, hyperspectral, thermal imaging, and more.

Flexibility in sensing and mounting options is a key benefit of this Phoenix system. The Scout-32 is designed to fly on more robust UAVs, including the Phoenix TerraHawk CW-20, the Vapor 55, the M600 Pro, and more. This system can also be adapted for vehicle and backpack configurations.

**Why Scout-32?**

- » **Operating Range:** Up to 65 m AGL @ 40% Reflectivity
- » **Live Data Feed:** View and analyze data in real time
- » **Remote Data View:** Transmit live data to remote viewers using 4G connection
- » **Flexible Mounting:** Mount on a fixed-wing, VTOL drone, multi-rotor drone, vehicle, or even backpack
- » **Acquisition Upgrades:** Dual LiDAR Sensors; High-Res DSLR; RGB GigE Cam; thermal, hyperspectral imaging sensors panoramic/spherical cameras; and more
- » **Data Precision Upgrades:** IMU Upgrade Options, Dual GPS Antenna Upgrade Options
- » **Visual Range:** 360° field of view

**Find a Scout that's right for you!**  
**Need higher accuracy?** See our Scout ULTRA  
**On a budget?** Ask about our other Scout packages.

- » **Power Lines**
- » **Precision Agriculture & Forestry**
- » **Construction Site Surveying**
- » **Light Vegetation & Canopy Penetration**
- » **Open Pit Mining Operations**
- » **Stockpile Volumetrics**
- » **General Mapping**

**QUICK SPECS & DIMENSIONS**



**SYSTEM INFORMATION**

Dimensions (Sensor)	24.6 x 11.6 x 11.6 cm
Operating Voltage	12-28 V
Power Consumption	~40 W
Operating Temperature	-10° to 40° C
Mounting Options	Multi-rotor, Backpack, Vehicle
Ground Vehicle Options	Roof Rack or Suction Cup
Accessories	RGB, DSLR, Thermal, and more
Weight	2.4 kg / 5.29 lbs.
Recommended Scan Height	65 m
Absolute Accuracy	35-55 mm RMSE @ 50 m Range

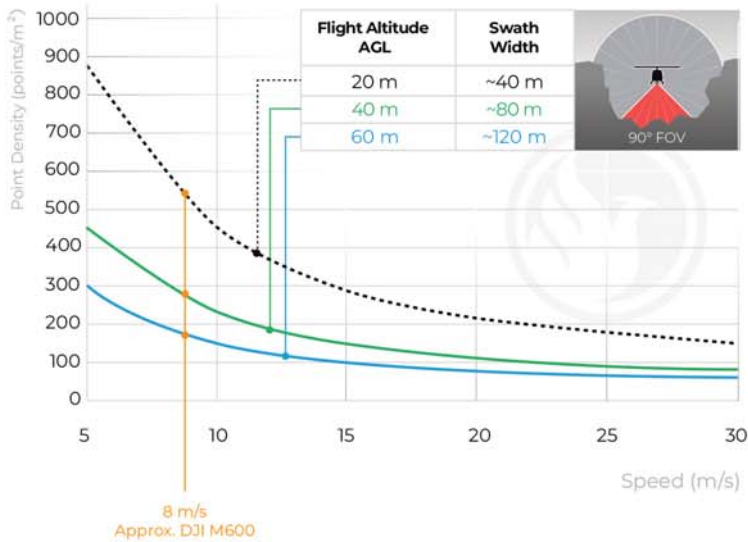
**LIDAR SENSOR**

Laser Properties	Class 1 (eye safe), 905 nm
Range Min / Max	1.0 m / 120 m
Scan Rate	700 k shots/s, up to 2 returns
Field of View	40° Vertical / 360° Horizontal
Multiple Echoes	2
No. of Lasers	32

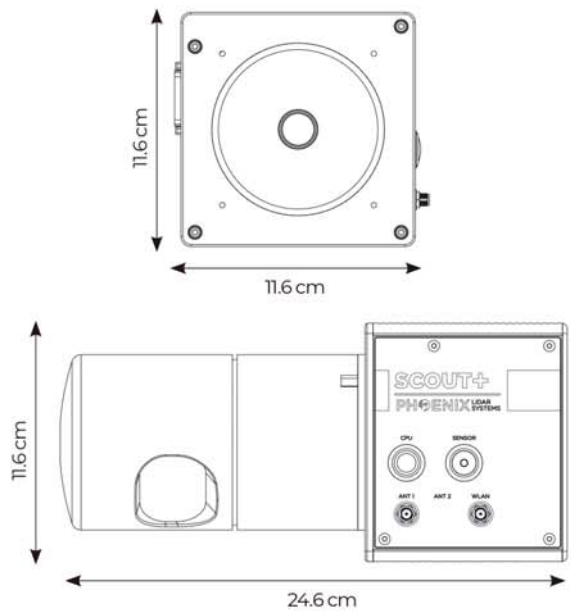
**NAVIGATION SYSTEM**

Constellation Support	GPS, GLONASS
Support Alignment	Static, Kinematic, Dual-Antenna
Operation Modes	Real-time, Post-Processing optional
Accuracy Position	1 cm + 1 ppm RMS horizontal
PP Attitude Heading RMS Error	0.019 / 0.074° IMU options

**POINT DENSITY BY SPEED & ALTITUDE**



**DIMENSIONS**



**Explore a Phoenix LiDAR System for your team. Contact us!**